



1786

1770

1775

1780

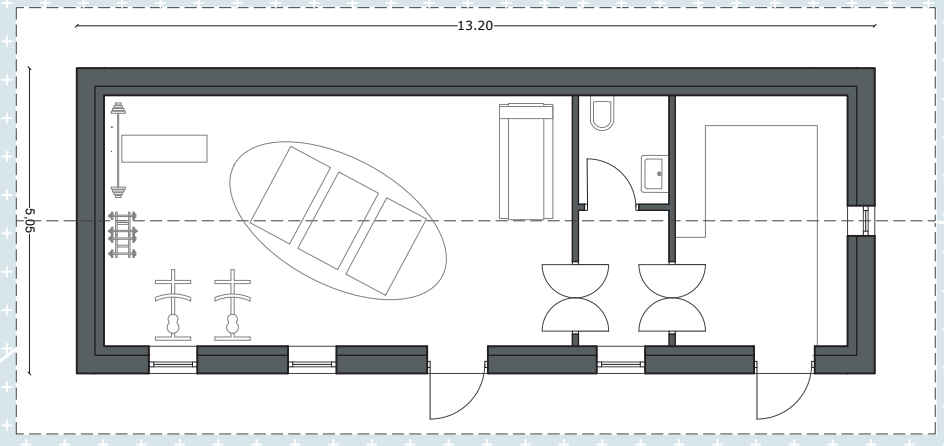
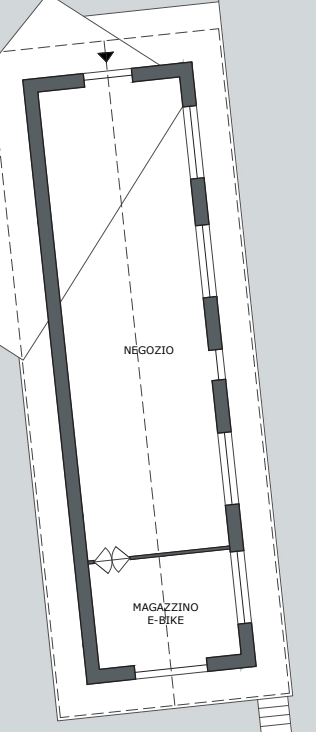
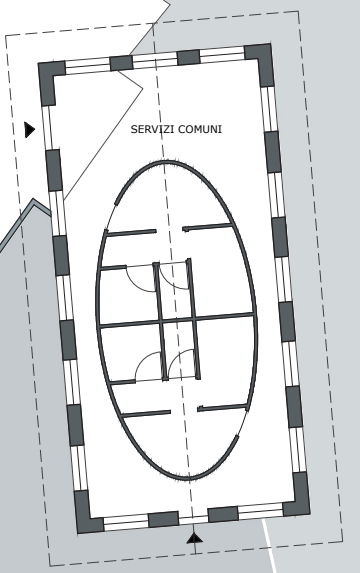
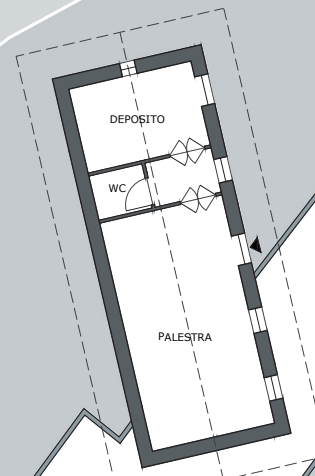
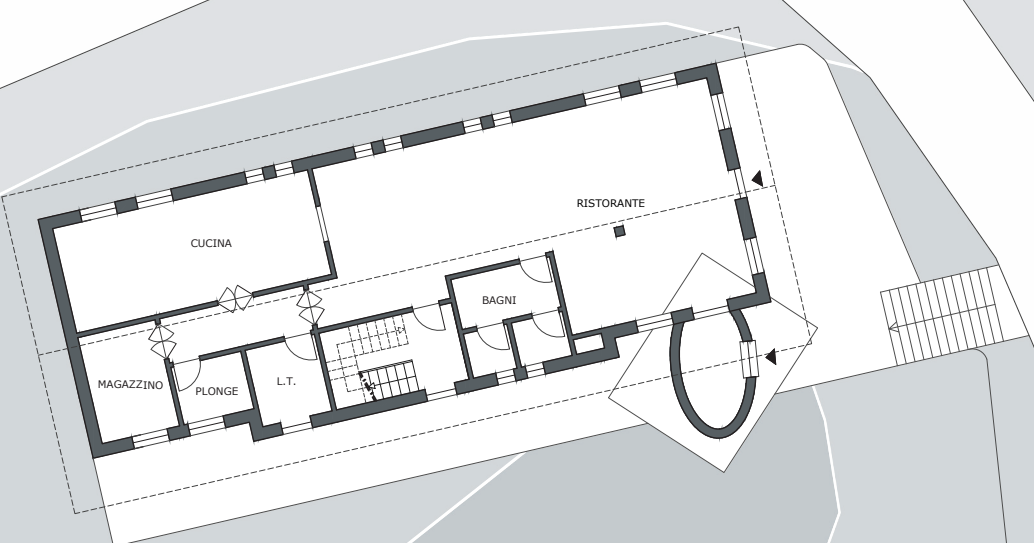
1785

1787

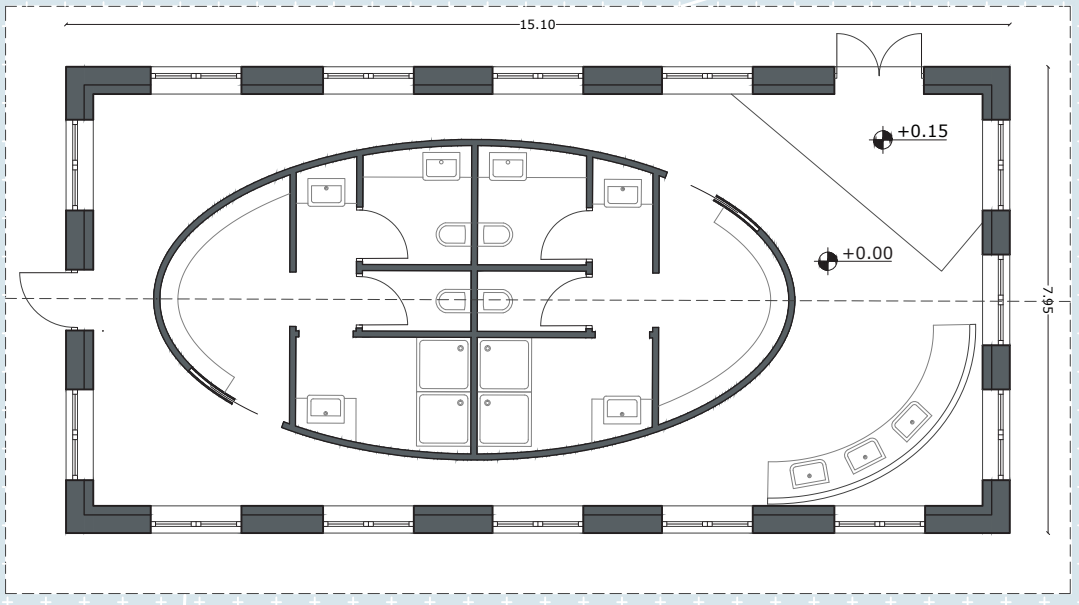
1790

Pianta di Progetto 1:200

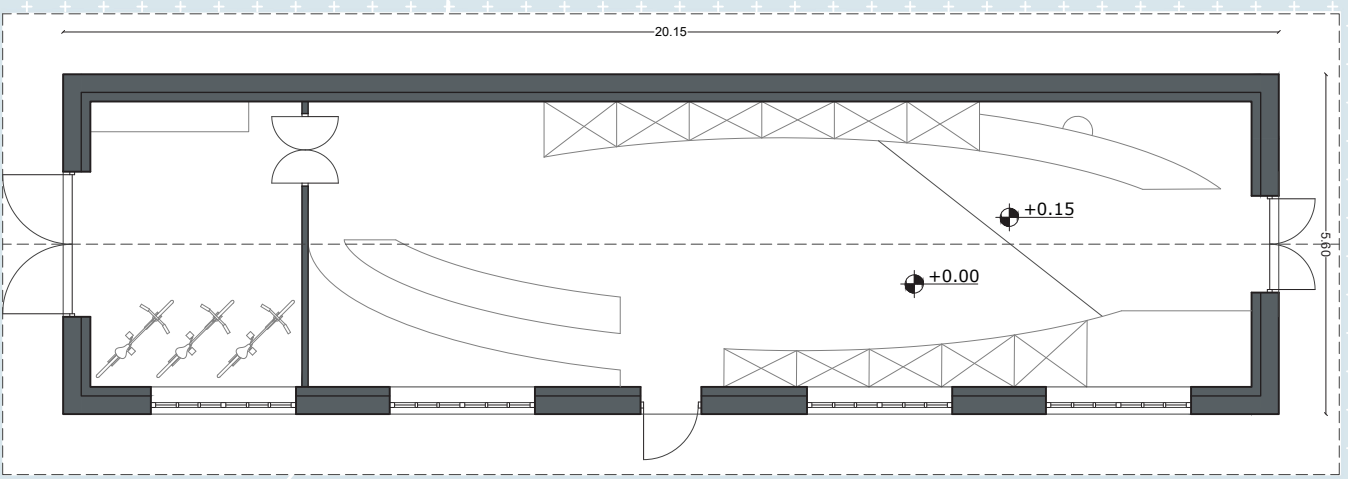
- Pianta dei moduli abitativi
- Pianta delle piazzole
- Pianta degli edifici di servizio



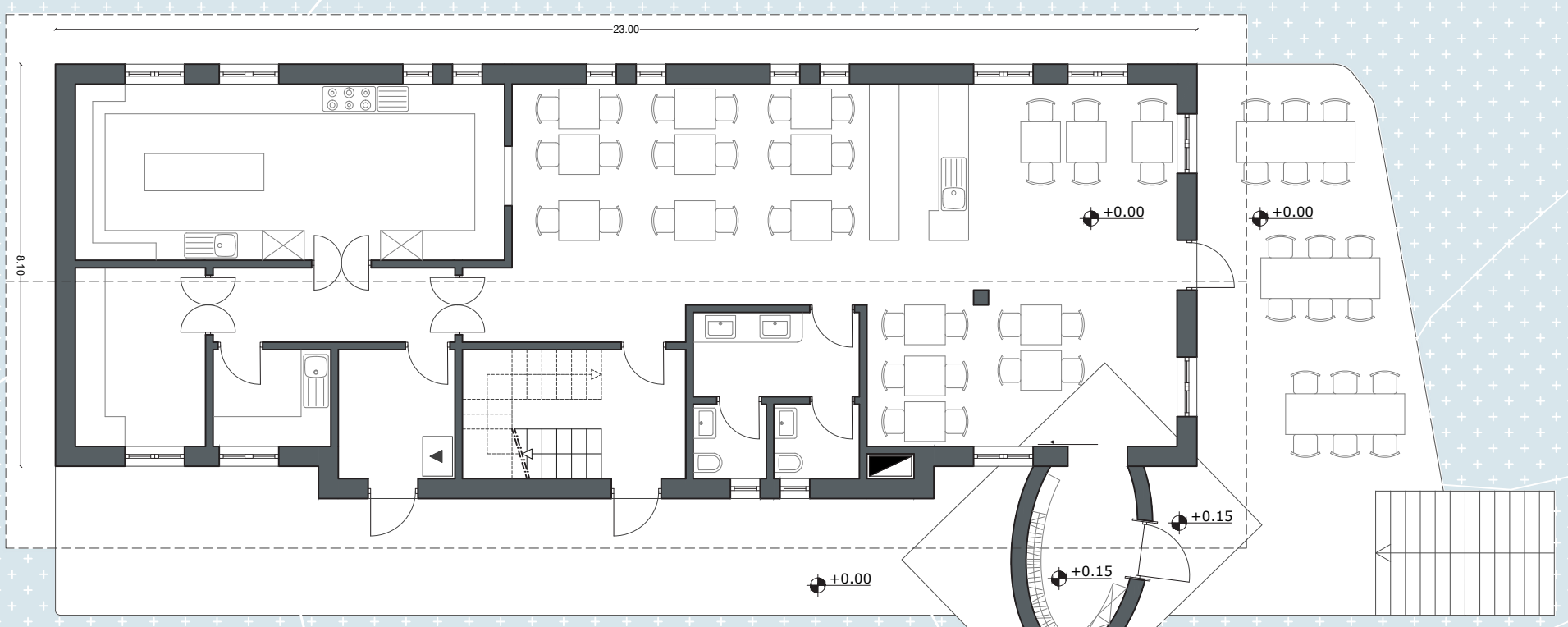
Pianta Palestra 1:100



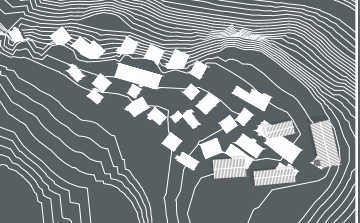
Pianta servizi comuni 1:100



Pianta negozio/noleggio E-Bike 1:100



Pianta Piano Terra Rifugio 1:100



Villaggi d'acqua: disastri e nuove opportunità
La memoria del villaggio sommerso di Morasco nel progetto di un'area attrezzata per l'escursionismo di montagna

POLITECNICO DI TORINO
CORSO DI LAUREA MAGISTRALE
ARCHITETTURA COSTRUZIONE CITTA'

RELATORE **Chiara Lucia Maria OCCELLI**
CORELATORI **Riccardo PALMA**
Irene RUIZ BAZÁN

CANDIDATO

Alessia CASTELLANO



Politecnico di Torino